

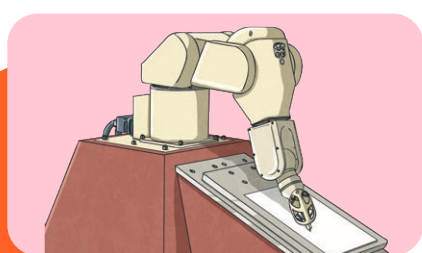
Katie and Tex Explore Robotics and AI

Tech File



The word robot stems from the Czechoslovakian word robota meaning 'forced labour'. The word was first used over a hundred years ago in a play about mechanical people built to work in factories. Since then, people have been fascinated with the idea of robots.

Robots are machines that are preprogrammed to do different jobs often without people having to control them. They can work very accurately and very quickly. They can also work in dangerous places or with dangerous materials.



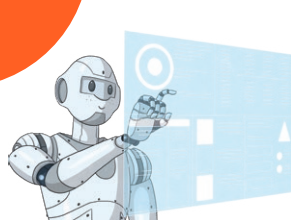
Some robots work on production lines in factories. They can be used to assemble cars or make furniture.

Robots are also used to handle radioactive waste materials that would be dangerous to humans. Robots have even travelled to space to help us explore new planets.

Not all robots look like humans. This dog robot can run, jump and play just like a real dog.



Some robots are designed to work inside computer devices. These are called bots.



Many robots are now making use of AI or artificial intelligence. AI allows machines to learn from their experiences in a similar way to humans. AI is used to make video games more realistic. It is also used in streaming sites to predict what we might like to listen to or watch.

Disclaimers:

Any factual information within this resource is accurate and based on current research as of February 2024. Any assumptions made in the analysis of this resource are not reflective of the position of Twinkl in relation to AI. Twinkl neither endorses nor is affiliated with any AI system referred to in this resource. AI systems are only as good as the data they are trained on and are vulnerable to bias and can provide incorrect information, therefore human editing is always advised. In order to ensure privacy is maintained, personal and sensitive data must not be entered into AI tools. Twinkl cannot be held responsible for the use of external AI tools; protecting children from harmful content online, including that generated by AI, should be of the utmost importance. As always, please ensure you check the suggested age-rating for any AI tools you choose to use.

This resource contains links to external websites and/or external apps. Please be aware that the inclusion of any link in this resource should not be taken as an endorsement of any kind by Twinkl of the linked website and/or app, or any association with its operators. You should also be aware that we have no control over the availability of the linked pages and/or apps. If the link is not working, please let us know by contacting TwinklCares and we will try to fix it although we can assume no responsibility if this is the case. We are not responsible for the content of external sites and/or external apps.

Did You Know...?

Some robots are smaller than a grain of salt! They are called nanorobots. Scientists are beginning to investigate how nanorobots can be used to find and treat cancer cells and blood clots.

What Can You Do?

Design or build a model of your own robot. Label the different parts to explain how it works and what it can do.

Disclaimers:

Any factual information within this resource is accurate and based on current research as of February 2024. Any assumptions made in the analysis of this resource are not reflective of the position of Twinkl in relation to AI. Twinkl neither endorses nor is affiliated with any AI system referred to in this resource. AI systems are only as good as the data they are trained on and are vulnerable to bias and can provide incorrect information, therefore human editing is always advised. In order to ensure privacy is maintained, personal and sensitive data must not be entered into AI tools. Twinkl cannot be held responsible for the use of external AI tools; protecting children from harmful content online, including that generated by AI, should be of the utmost importance. As always, please ensure you check the suggested age-rating for any AI tools you choose to use.

This resource contains links to external websites and/or external apps. Please be aware that the inclusion of any link in this resource should not be taken as an endorsement of any kind by Twinkl of the linked website and/or app, or any association with its operators. You should also be aware that we have no control over the availability of the linked pages and/or apps. If the link is not working, please let us know by contacting TwinklCares and we will try to fix it although we can assume no responsibility if this is the case. We are not responsible for the content of external sites and/or external apps.